

ARLINGTON COUNTY PROFILE

OVERVIEW OF ARLINGTON

Arlington County is located in northern Virginia, directly across the Potomac River from Washington, D.C. The County encompasses 25.8 square miles of land, which was originally split off from Fairfax County in 1801 and ceded by Virginia to be included in the ten-mile square Federal District. In 1847, however, Congress allowed the land to return to the jurisdiction of Virginia following a vote in favor of retrocession by its members. This area was then known as Alexandria City and Alexandria County. In 1920, to avoid confusion, the county was renamed Arlington County.

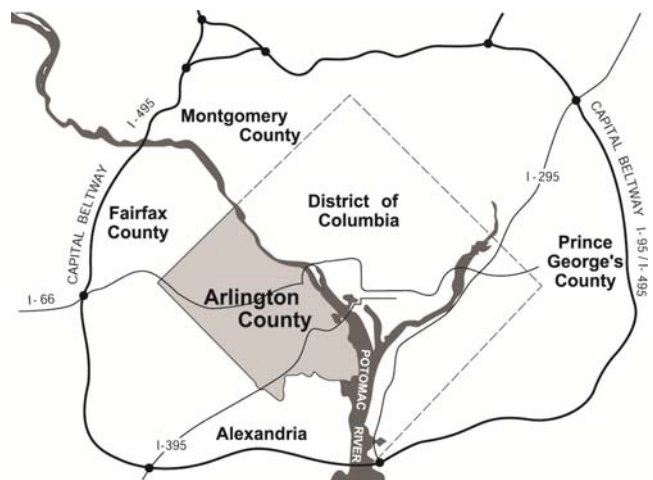
Annexation of any part of Arlington County by neighboring jurisdictions is prohibited by present law unless the entire County is annexed with the approval of County voters. There are no jurisdictions with overlapping debt or taxing powers. The water and sewage systems are operated on a self-supporting basis by the County government.

Arlington’s location in the center of the Washington metropolitan region, just five minutes from Washington by car or Metrorail, has made the County a highly desirable business and residential location. Arlington has maintained high-quality residential neighborhoods while supporting well-managed growth. High-density commercial and residential development is focused around Metro stations in the Rosslyn-Ballston corridor and the Jefferson Davis corridor, which includes both Pentagon City and Crystal City.

Arlington County has an estimated 2018 population of 225,200, an increase of 18.9 percent over the 2000 population. Additionally, Arlington is home to an estimated 224,200 jobs, as of January 1, 2018.

Almost all of the land in Arlington County has been developed. This development consists of extensive single-family residential areas, as well as commercial, office, and multi-family residential structures.

Economic activity in Arlington County has historically been closely associated with numerous governmental activities of the Washington Metropolitan region. In 2018 about 21.6 percent (or about 48,400) of the jobs in Arlington County are with the numerous federal, state or local government agencies. In recent years, however, the private employment base, particularly in the service sector, has increased substantially. The 2018 estimates show that sectors of the professional and technical services (23.4 percent and 52,500 jobs) and other services (22.7 percent and 50,800 jobs) have become the top industries for employment in Arlington County.



ORGANIZATION OF ARLINGTON COUNTY GOVERNMENT

The government of Arlington County has been organized according to the County Manager Plan of Government since 1932. Arlington County was the first jurisdiction in the United States to adopt a manager form of government by popular vote.

The five members of the County Board are elected at large for staggered, four-year terms. No more than two members are elected at one time. The Chairman of the County Board is elected annually by the members.

The County Board is responsible for several appointments. The County Board appoints a County Manager to serve as the chief executive and administrator of the County. The County Manager serves at the pleasure of the County Board, implements its policies, directs business and administrative procedures, and appoints department directors.

Assisting the County Manager are four Deputy County Managers, three Assistant County Managers and the Directors of 12 departments: Fire; Police; Public Safety Communications and Emergency Management; Environmental Services; Human Services; Economic Development; Community Planning, Housing and Development; Parks and Recreation; Management and Finance; Libraries; Human Resources; and Technology Services.

The County Board also appoints an Auditor to complement and augment the County’s existing internal auditing program. The auditor, and an advisory committee, report directly to the County Board and focuses on tightening financial oversight and deepening program performance review.

Finally, the County Board appoints a County Attorney. The County Attorney provides legal services to the County Board, County agencies and personnel, elected County officials, independent County boards and commissions, and the Arlington School Board.

The operation of public schools in Arlington County is the responsibility of a five-member School Board. School Board members serve staggered, four-year terms in a sequence similar to that of County Board members.

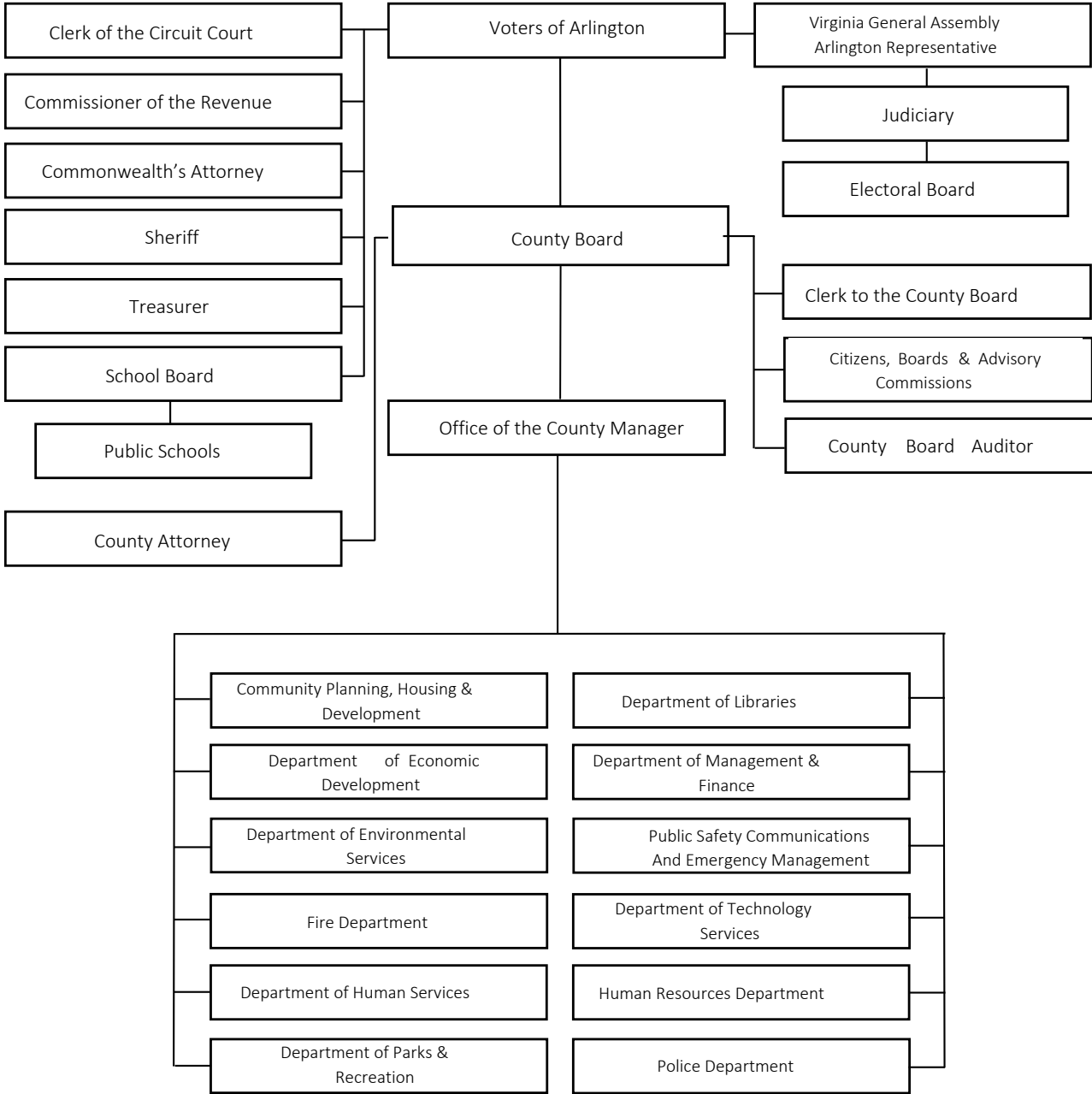
A 1992 revision of the State Code provided a local option to elect the School Board; Arlington voters chose to exercise that option via a November 1993 referendum. As of November 1994 and continuing each year thereafter, School Board members are elected.

The Superintendent of Schools is appointed by the School Board for a four-year term; the Superintendent administers the operations of the County’s public schools. The local share of the cost of operating public schools in the County is met with an appropriation and transfer by the County Board from the County’s General Fund. Operations of the School Board, however, are independent of the County Board and the County administration as prescribed by Virginia law.

In addition to the County Board, other elected County officials include the Commonwealth’s Attorney, Sheriff, Commissioner of the Revenue, Treasurer, and Clerk of the Circuit Court. The Judges of the Circuit Court, the General District Court and the Juvenile and Domestic Relations District Court are appointed by the State legislature.

The structure of Arlington County’s Government is depicted in an organizational chart on the following page.

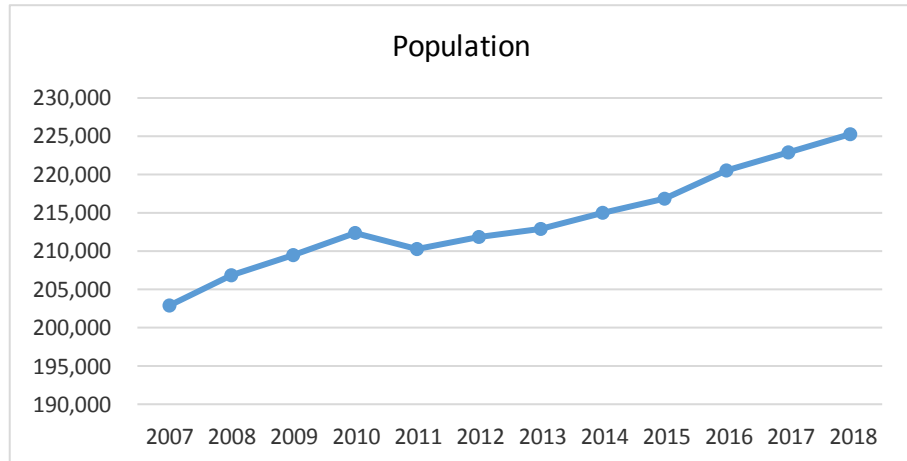
ORGANIZATION OF ARLINGTON COUNTY GOVERNMENT



DEMOGRAPHICS

The Planning Division of the Department of Community Planning, Housing and Development (CPHD) estimates Arlington County’s 2018 population to be 225,200. Arlington continues to be among the most densely populated jurisdictions in the country. The County’s population has grown over the past eleven years, as shown in the chart on the following page, and is projected to continue at a similar rate. The 2011 dip in population is due to the use of 2010 Census Data. The

population estimates for 2002-2009 used the 2000 Census as a base. The new 2010 Census data were used to recalibrate the Planning Division’s method for estimating Arlington’s population for 2011 and beyond. Estimates for 2007-2009 and 2011-2018 are provided by the CPHD Planning Division, and are based on new residential



construction and estimates of average household size and vacancy rates. The 2010 number is based on the 2010 Census. The Planning Division estimates that 19.1 percent (43,100 persons) of the population are under the age 20. Individuals between the ages of 20-24 make up 6.6 percent or 14,800 persons. Those between the ages of 25-34 make up the largest share of the population at 25.1 percent or 56,600 persons. Persons between the ages of 35-44 represent 16.7 percent of the population (or 37,700 persons), those between the ages 45-64 make up 22.7 percent (or 51,100), those between the ages of 65-84 include 8.5 percent (or 19,100 persons) and those 85 and over represent 1.3 percent of the population (or 2,800 persons).

RACIAL/ETHNIC COMPOSITION

Arlington County takes pride in, and gains vitality from, the diversity of its population. According to the 2010 Census, 64.0 percent of Arlington residents are white, 15.1 percent are Hispanic, 8.2 percent are black or African-American, 9.6 percent are Asian or Other Pacific Islanders, and 3.0 percent identified as another race or two or more races. (Note: percentages may not add due to rounding.)

The Planning Division estimates that the aggregate population of Arlington increased by 9.6 percent between 2000 and 2010. (Note that staff believes the Census 2000 figure to be a bit lower than the actual population.) From 2000 to 2010 the largest increase in population among the racial/ethnic groups was an increase of about 18,472 among the white population. Among other groups, the Asian-Pacific Islander population also increased substantially, by 3,549 persons. The Hispanic population decreased by 3,886 persons and the African-American population decreased by 156 persons between 2000 and 2010. The following table shows the change in population among various racial/ethnic groups from 2000 to 2010. The 2000 and 2010 figures are from the Decennial Censuses.

Racial/Ethnic Group	2000	2010	% Change
Non-Hispanic/Latino			
White alone	114,489	132,961	16.1%
Black or African American alone	17,244	17,088	-0.9%
Asian/Pacific Islander	16,346	19,895	21.7%
Other/MultiRacial	6,106	6,301	3.2%
Total Non-Hispanic/Latino	154,185	176,245	14.3%
Hispanic/Latino	35,268	31,382	-11.0%
TOTAL	189,453	207,627	9.6%

EDUCATION

Arlington’s population is among the most highly educated in the country. According to the U.S. Census Bureau 2016 American Community Survey, 93.8 percent of all household residents age 25 and older were high school graduates, 73.7 percent were college graduates, and 39.1 percent had graduate or professional degrees. Of the Arlington Public School (APS) class of 2017-2018, 93 percent planned to pursue higher education, and the average expenditure per pupil was expected to be \$19,340 in the 2018 fiscal year.

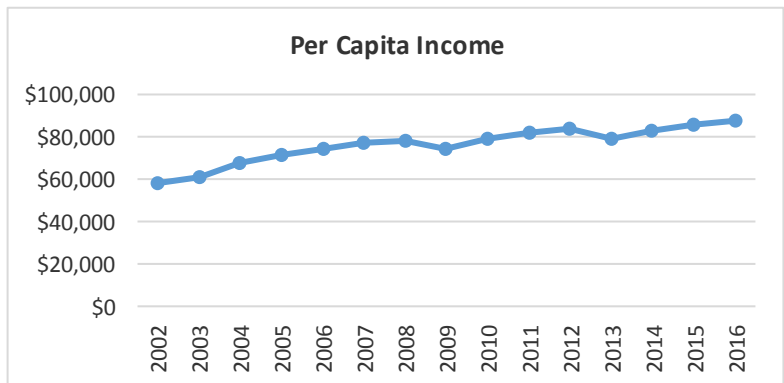
PERSONAL INCOME

The educational achievements of Arlington’s population are reflected in the County’s income statistics as well. In 2016, the Bureau of Economic Analysis reported that Arlington’s per capita personal income was \$87,986. According to the U.S. Census American Community Survey, the median household income in Arlington County in 2016 was \$110,388. According to ESRI, Arlington County had an effective buying power of \$10.53 billion in 2017.

The Per Capita Income graph above shows the growth in per capita personal income since 2002. Income figures for 2002 through 2016 are from the U.S. Bureau of Economic Analysis.

HOUSING

According to Planning Division estimates, there are 114,700 total housing units in Arlington as of January 2018. A housing unit is a multi-family dwelling or a single-family dwelling attached to other dwellings or a single-family detached dwelling. The majority (65.4 percent or 75,000) of housing units in Arlington are multi-family. There are an estimated 28,500 single-family detached (24.8 percent), 11,100 single-family attached housing units (9.7 percent) and 100 other types of housing units in Arlington. Since 2000, growth in housing units has been largely due to multi-family development. Between 2000 and January 2018, 22,627 new multi-family units have been completed (an increase of 43.2 percent), compared to 816 single family attached units. There has been a net gain of 832 single family detached units during the same time span. In 2017, the Housing Division estimated that owners occupied 41.0 percent and renters occupied 59.0 percent of occupied housing units.



HOUSEHOLD COMPOSITION

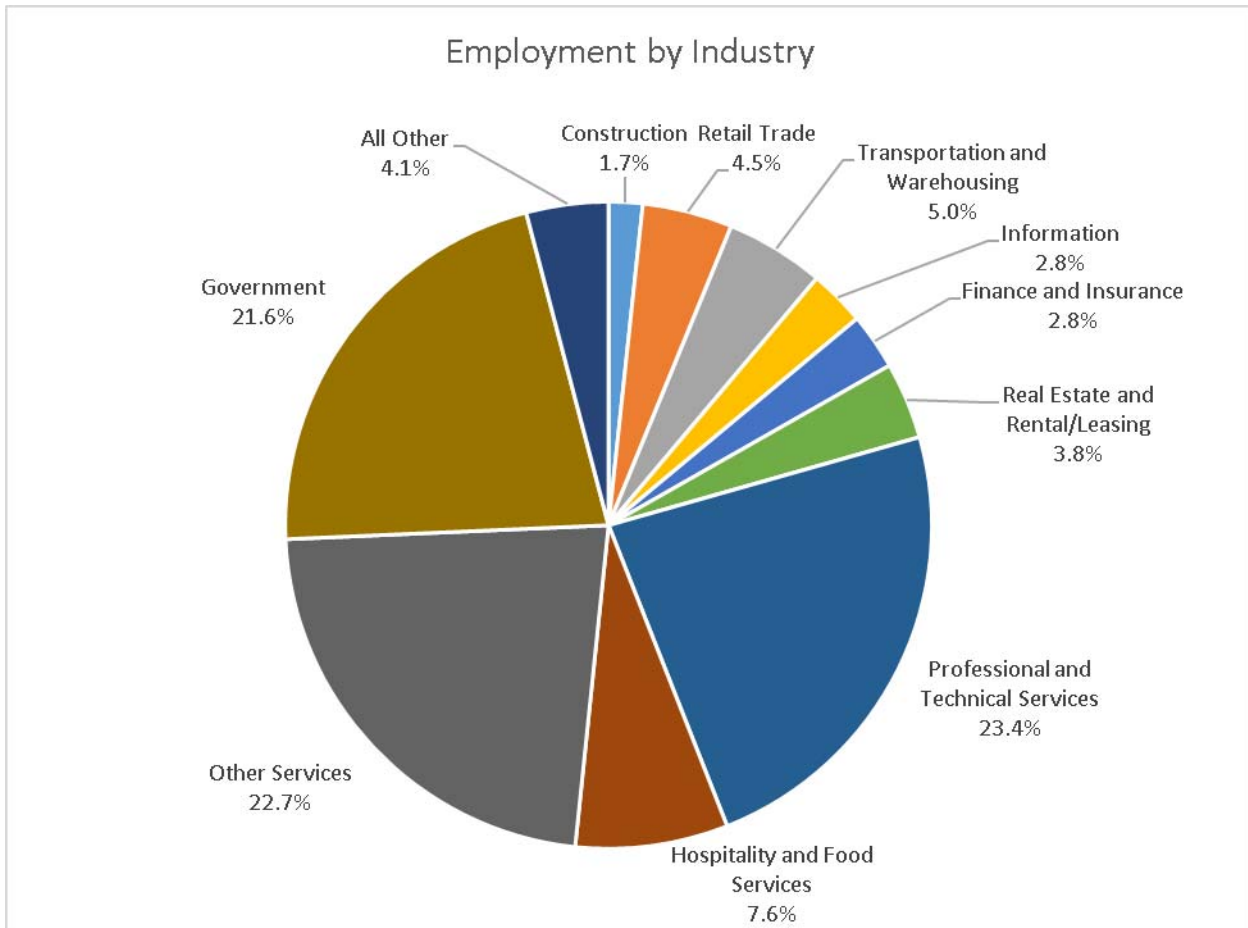
All persons living in a housing unit are termed a household. As of January 2018, the CPHD Planning Division estimates that there are 106,300 households in Arlington County. According to the 2010 Census the average household size is 2.09 persons. The 2010 Census also reports that an estimated 42.4 percent of Arlington households were family households and 57.6 percent were non-family households.

COMMUNITY FACILITIES IN ARLINGTON

▪ Acres of County Open Space	1,190	▪ Synthetic Fields	15
▪ Miles of Biking/Walking/Jogging Trails	94	▪ Nature Centers	3
▪ Parks	182	▪ Senior Centers	5
▪ Tennis and Basketball Courts	163	▪ Community Centers	13
▪ Natural Grass Fields	82	▪ Fire Stations	10
▪ Libraries	8		

AT-PLACE EMPLOYMENT

According to Arlington County estimates, the total number of jobs in the County increased by about 11.4 percent between 2000 and 2018. The service sector comprises a significant share of jobs in Arlington. About 23.4 percent of all jobs are in the professional and technical services sector. Another 22.7 percent of jobs are in other service sectors, including administrative, education, and health. The government sector also continues to comprise a large share of Arlington jobs. About 21.6 percent (48,400 jobs) of the County’s January 2018 employment is estimated to be in government. 2017 was the first year in which a sector (professional and technical services) other than government held the highest percentage of at-place jobs in Arlington County. This year, in 2018, the other services sector also surpasses the number of government jobs and became the second largest sector. The percentage of jobs in the government and business services sectors is likely to change in the short term as the County adjusts to employment moves associated with relocation of Department of Defense facilities to other jurisdictions due to the Base Realignment and Closure Commission (BRAC) recommendations of 2005. The 2017 unemployment rate in Arlington was 2.5 percent.



Sector	Jobs
Construction	3,800
Retail Trade	10,100
Transportation	11,100
Information	6,300
Finance and insurance	6,300
Real estate and Rental/Leasing	8,600
Professional and technical services	52,500
Hospitality and Food Services	17,100
Other Services	50,800
Government	48,400
All other	9,200
Total	224,200

- Source: Sector employment are Arlington County Planning Division 2018 estimates based on data from the U.S. Bureau of Economic Analysis for the year 2015 (most current available). Unemployment data is from the U.S. Bureau of Labor Statistics Local Area Unemployment Statistics (LAUS).
- Note: Jobs by sector may not add due to rounding.

TOP 10 PRINCIPAL PRIVATE EMPLOYERS

	COMPANY	NATURE OF BUSINESS	ARLINGTON EMPLOYEES
1	Accenture	Consulting Services	2,500-4,999
2	Deloitte	Consulting Services	2,500-4,999
3	Virginia Hospital Center	Healthcare	2,500-4,999
4	Booz Allen Hamilton	Consulting Services	1,500-1,999
5	Corporate Executive Board	Consulting Services	1,000-1,499
6	Lidl	Supermarket	1,000-1,499
7	Bureau of National Affairs	Information Services	1,000-1,499
8	PAE Government Services	Services	600-999
9	Marymount University	Education	600-999
10	Marriott International, Inc.	Hotel	600-999
TOTAL			13,800-24,490

Source: Arlington Economic Development

SELECTED SERVICE INDICATORS

	FY 2017 Actual	FY 2018 Estimate	FY 2019 Estimate
General Obligation Bond Rating	Aaa/AAA/AAA	Aaa/AAA/AAA	Aaa/AAA/AAA
New Voters Registered by Electoral Board (Calendar Year)	10,307	11,000	11,000
Inspections Conducted for Fire Code Enforcement, fire protection system, and hazardous materials inspections	3,283	3,200	3,200
Percentage of Fire Emergencies Reached Within Four Minutes of Dispatch	61%	60%	60%
Fire/EMS/Public Service Responses	55,159	58,000	58,000
Refuse Collected on County and Contracted Routes (Tons)	27,027	27,000	25,000
Total Curbside Recycling Tonnage Collected	13,733	13,800	13,800
Licensed Child Care Facilities (Family Day Care Homes)	150	135	135
Number of registrations in Parks and Recreation programs	61,882	62,000	62,000
Number of individuals registered with the Office for Senior Adult Programs (OSAP)	6,442	6,500	6,500
Police response time for Priority 1 calls (minutes from dispatch to arrival)	4:46	4:50	4:50