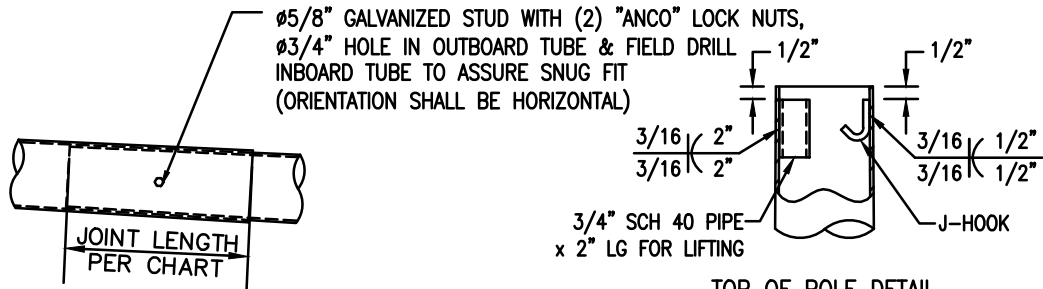


ARLINGTON COUNTY, VA  
 UMC & DATE OF MFG  
 POLE HEIGHT & GAGE  
 ARM LENGTH & GAGE  
 BOLT CIRCLE DIA

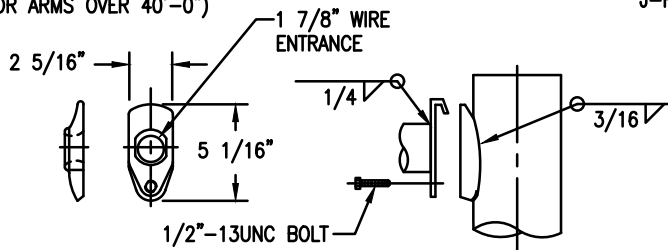
I.D. TAG DETAIL

DRILL (4) #29 ( $\phi.136"$ ) HOLES  
 ON 1 1/2"x3 1/2" CENTERS FOR  
 2"x4" ALUM. I.D. TAG ATTACHED  
 WITH (4) S.S. DRIVE SCREWS

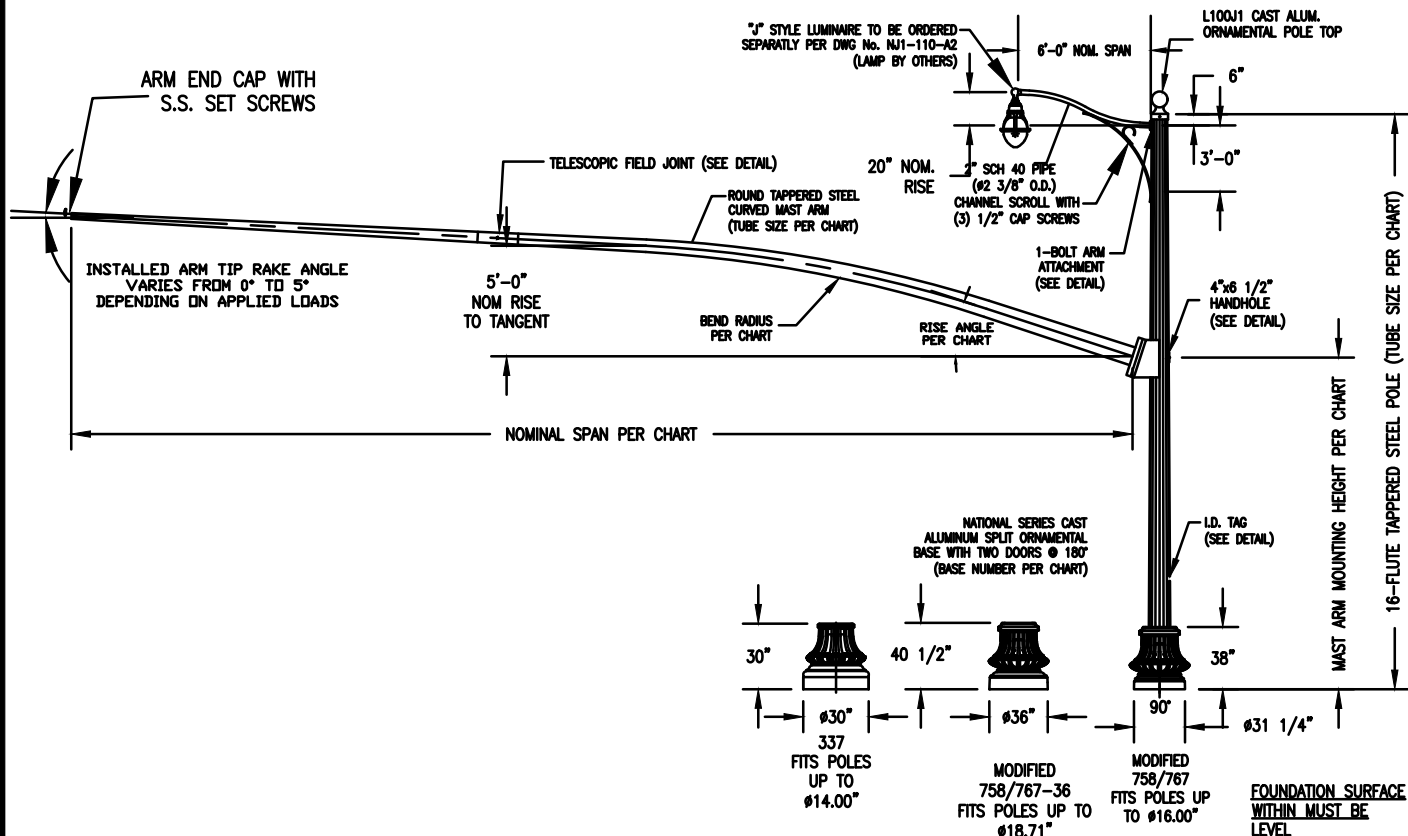


TELESCOPIC FIELD JOINT DETAIL  
 (FOR ARMS OVER 40'-0")

TOP OF POLE DETAIL  
 ORIENTATION OF PIPE &  
 J-HOOK AS REQUIRED



1-BOLT SIMPLEX LUMINAIRE ARM CONNECTION DETAIL



ORNAMENTAL POLE

1	01/31/2019
REVISION & DATE	



ARLINGTON COUNTY, VIRGINIA  
 DEPARTMENT OF ENVIRONMENTAL SERVICES

DRAWING NO.  
**63-05**