

# VISION ZERO & SAFETY IN ARLINGTON

## Background

Safer transportation means fewer injuries, and more healthful, active travel, with benefits for our quality of life.

On July 16, 2019, the Arlington County Board adopted a resolution committing to Vision Zero. The resolution directed County staff to:

- Take a **holistic, data-driven approach** to transportation safety.
- Develop Vision Zero goals and an Action Plan, with **significant community engagement**.
- **Address demonstrated inequities** in transportation deaths and serious injuries.
- Provide an **annual report on implementation** of the Vision Zero Action Plan.

## Analyzing Safety and Equity

Arlington's transportation network is relatively safe by national standards, but no death or severe injury on our streets or trails is acceptable.

County staff collect and analyze data to understand trends, patterns, and systemic safety issues. Crash and travel data will be used in this effort to guide public education, priority actions, and funding.

## Transportation-related Deaths per 100,000 People (2018)<sup>1</sup>

ARLINGTON COUNTY

.84

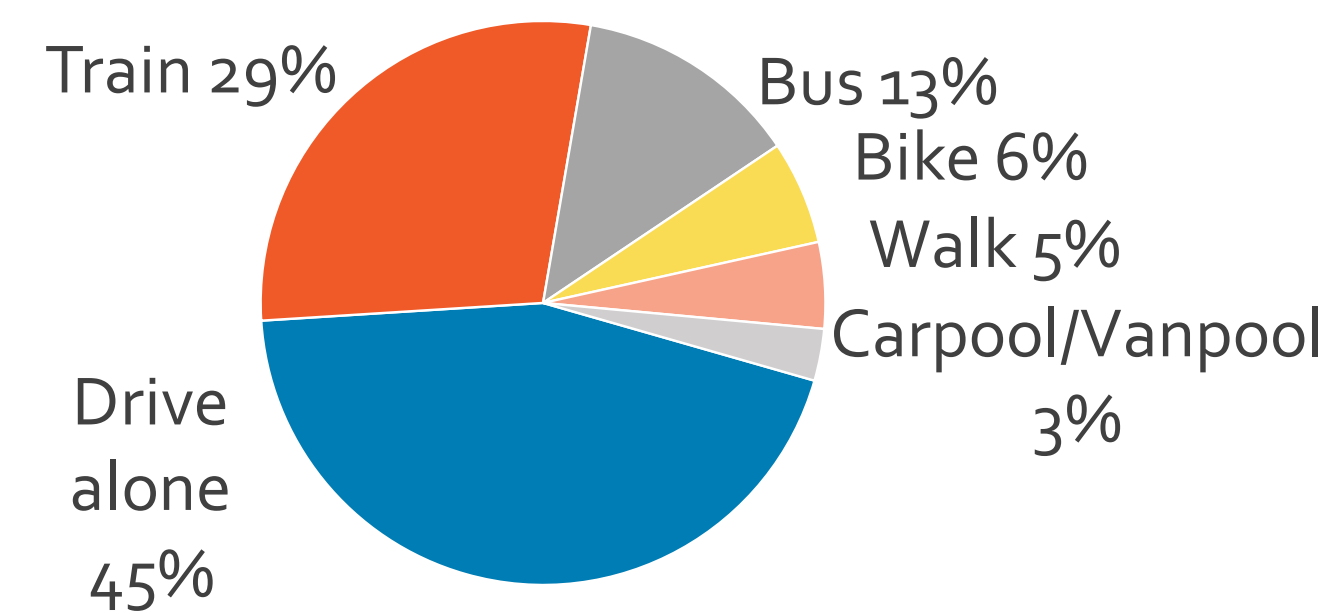


NATIONALLY

11.17

## How Arlington County Gets Around

### Arlington Resident Weekly Commute Mode<sup>2</sup>



About **8%** of commuters do not have access to a car<sup>3</sup>



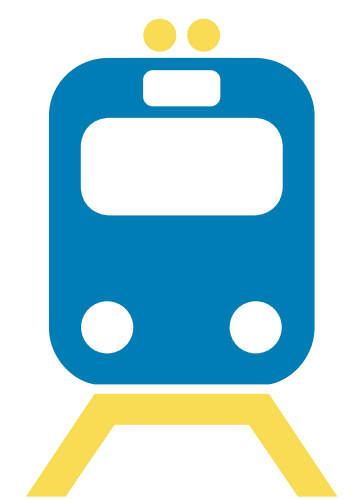
**63%** of Arlington residents who commute via Metro walk to the station<sup>4</sup>

16% take the bus and about 5% drive alone and park at Metro



**>50%** of trips

by Arlingtonians aged 25+ are via single occupancy car, truck, or van<sup>3</sup>



**>20%** of trips

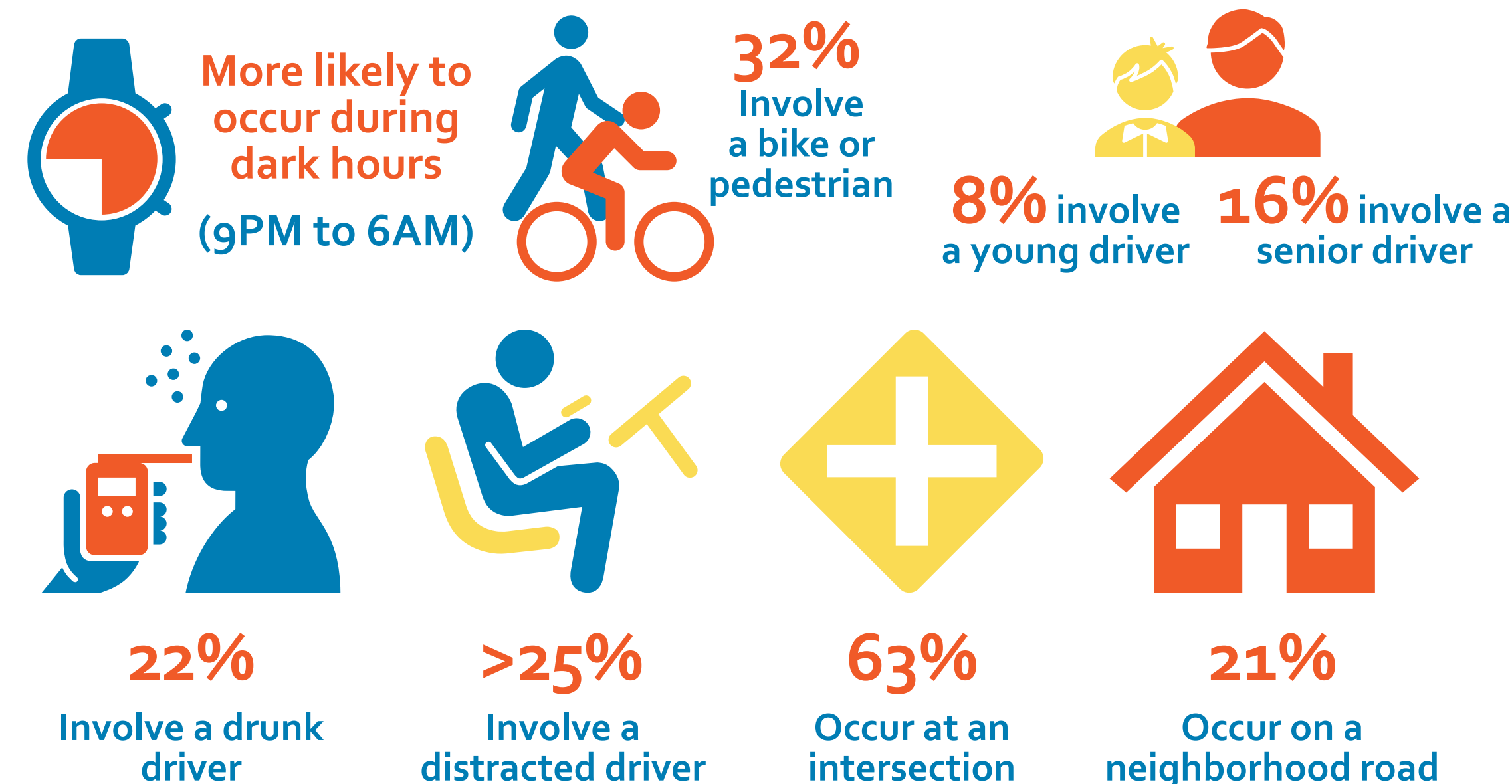
by Arlingtonians aged 25+ are via public transportation<sup>3</sup>



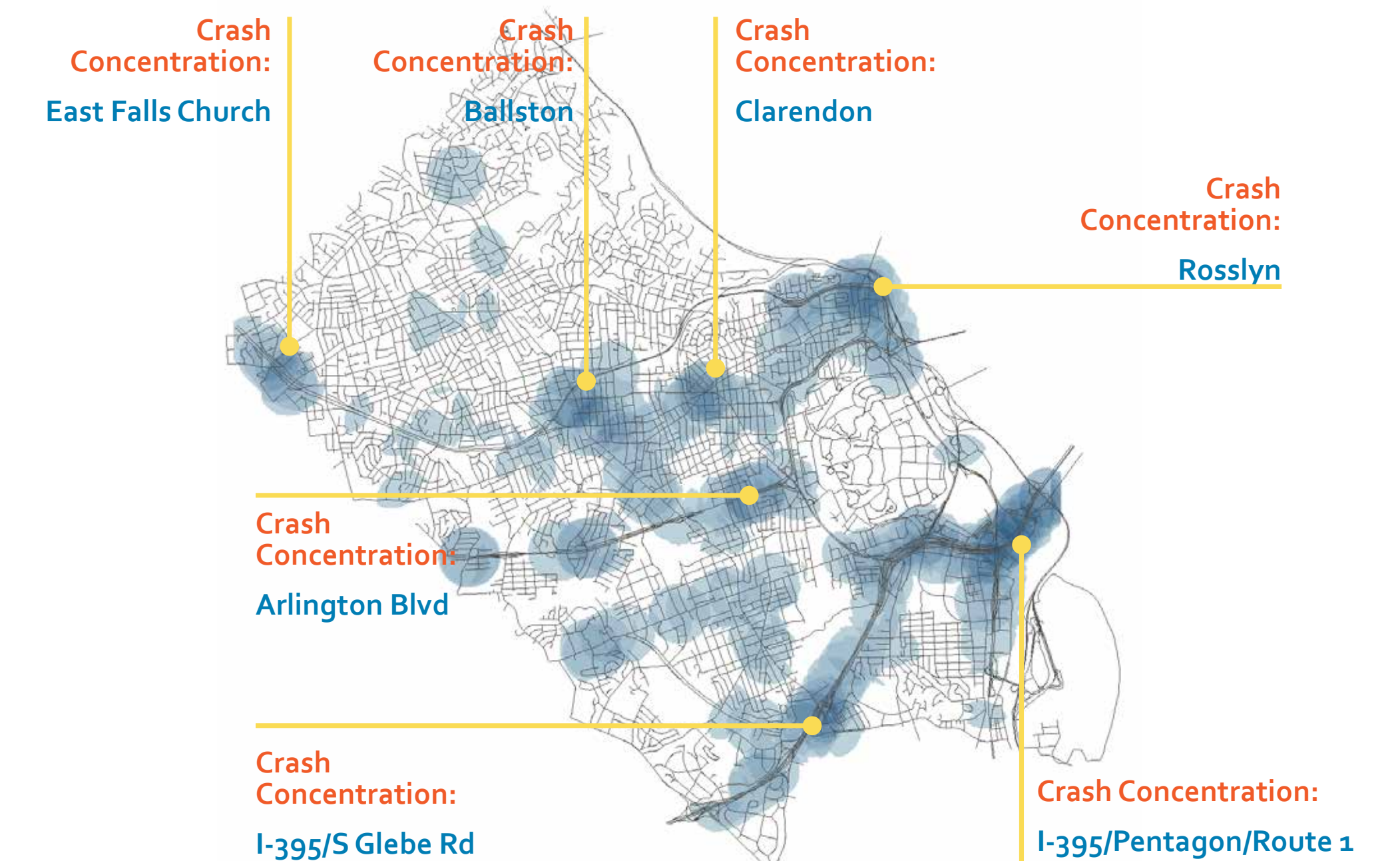
Photo: Sam Kittner/Kittner.com

## Arlington County Severe Crashes Facts<sup>5</sup>

In recent years, crashes led to an average of **3 fatalities & 53 severe injuries** per year.



## Fatal and Severe Crash Density<sup>5</sup>



### Data Sources

- 1- VDOT & NTSB 2018 crash reports
- 2- 2015 Arlington Resident Travel Survey Report - February 11, 2016
- 3 - 2017 ACS 5-Year Estimates from Census Bureau
- 4 - 2016 Metrorail Passenger Survey
- 5- Virginia Department of Transportation Full Crash Dataset 01/01/2013 - 7/31/2019 (yearly averages include only data through 12/31/2018)