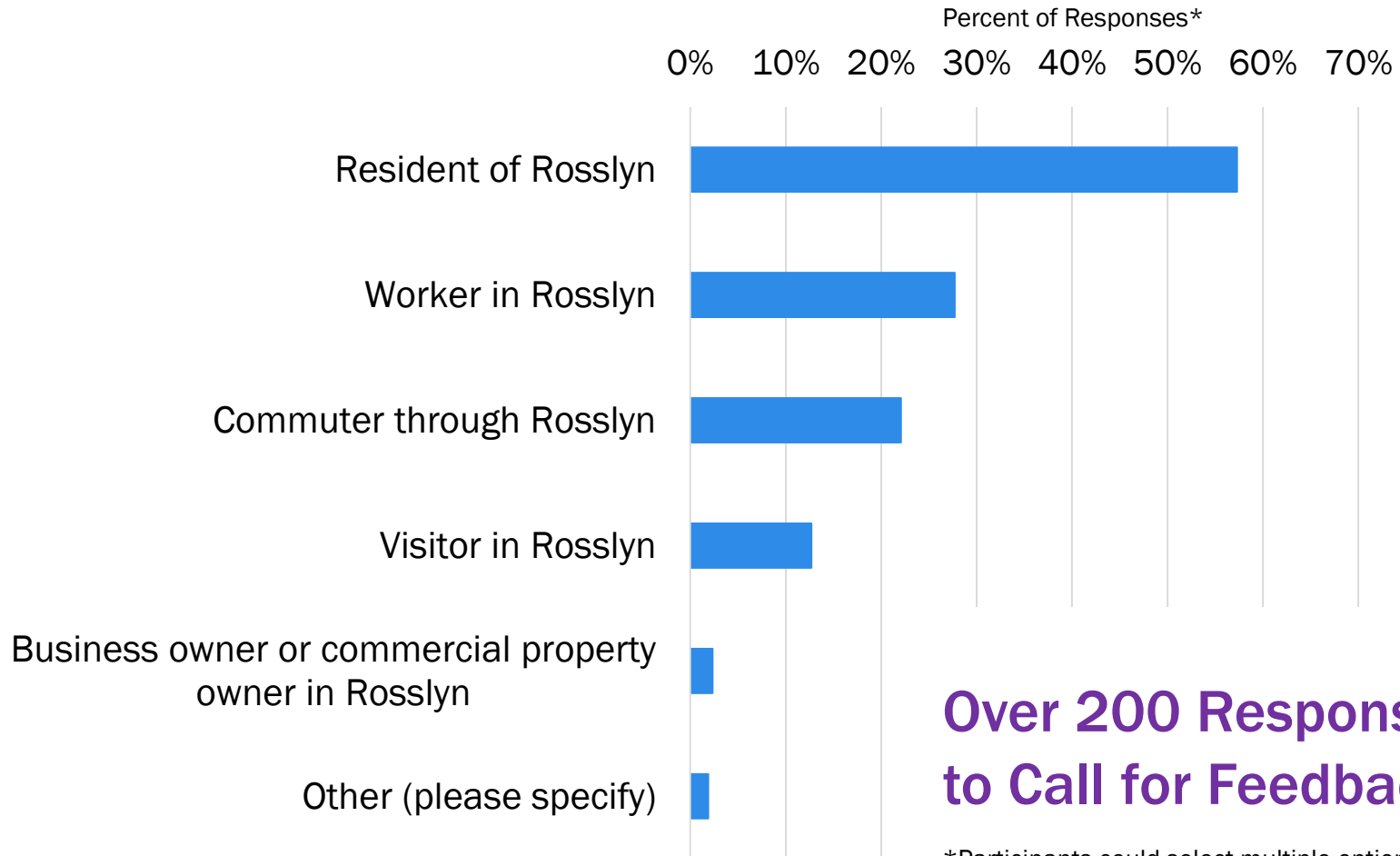


March–April 2018 Online Public Engagement

Community Feedback on Rosslyn's Street Enhancements

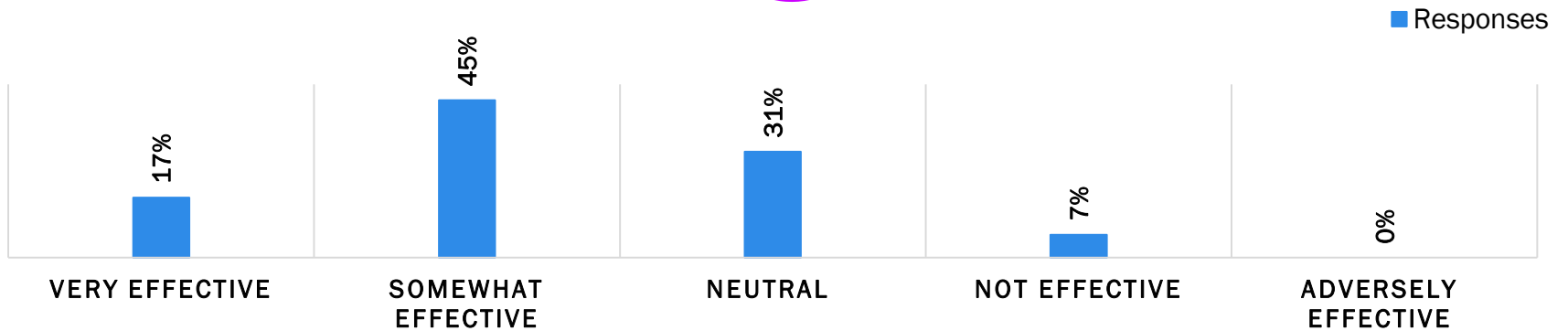
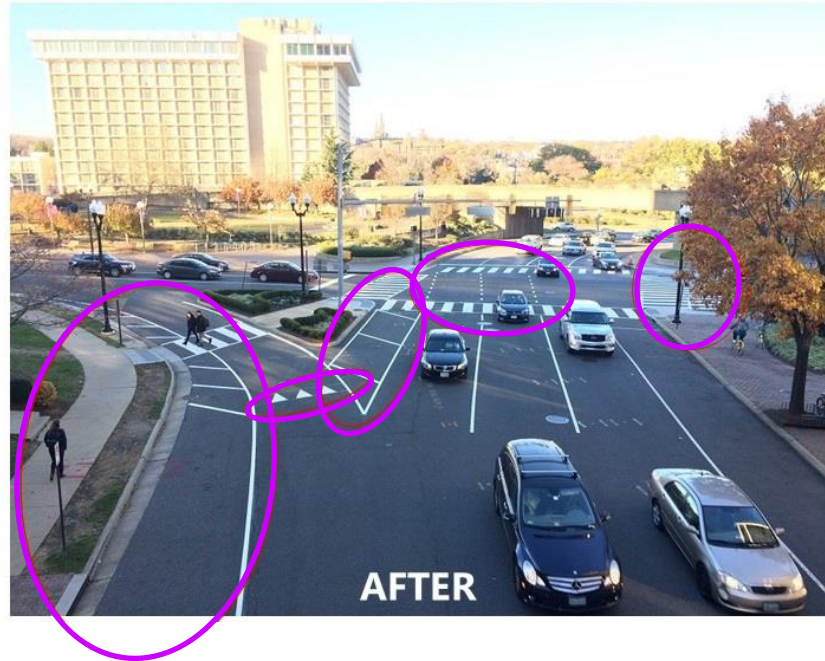
Participant Summary



**Over 200 Responses
to Call for Feedback**

*Participants could select multiple options.

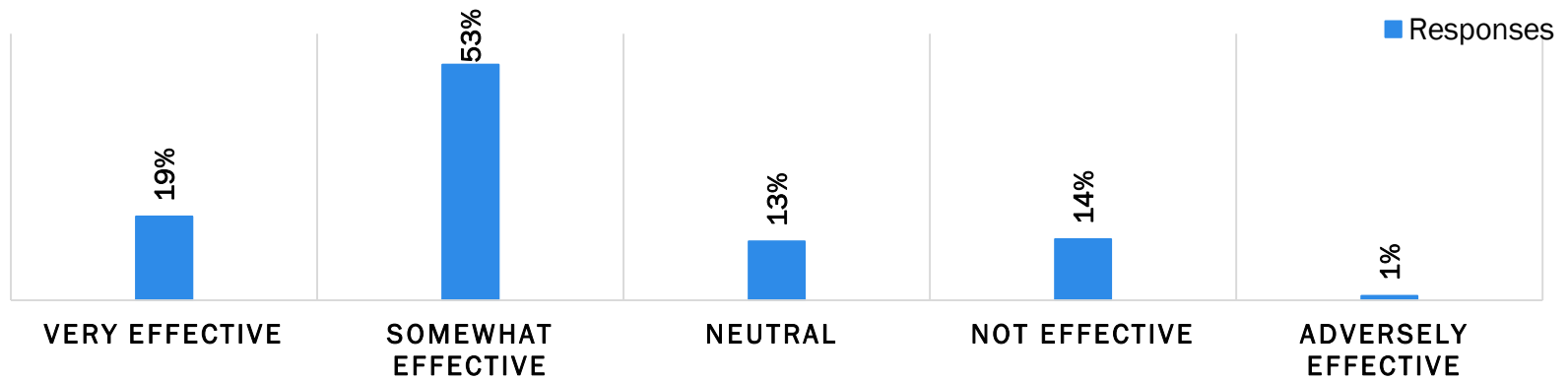
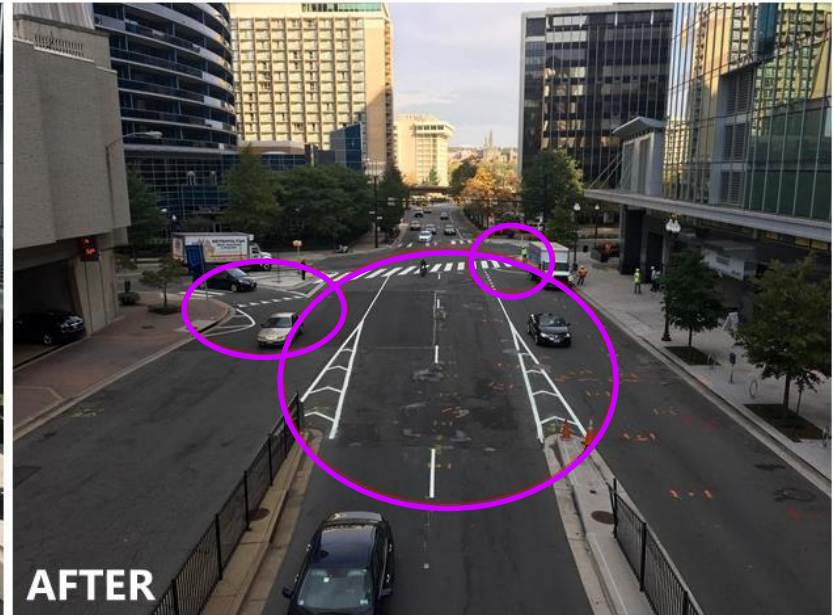
Lee Highway and Fort Myer Drive



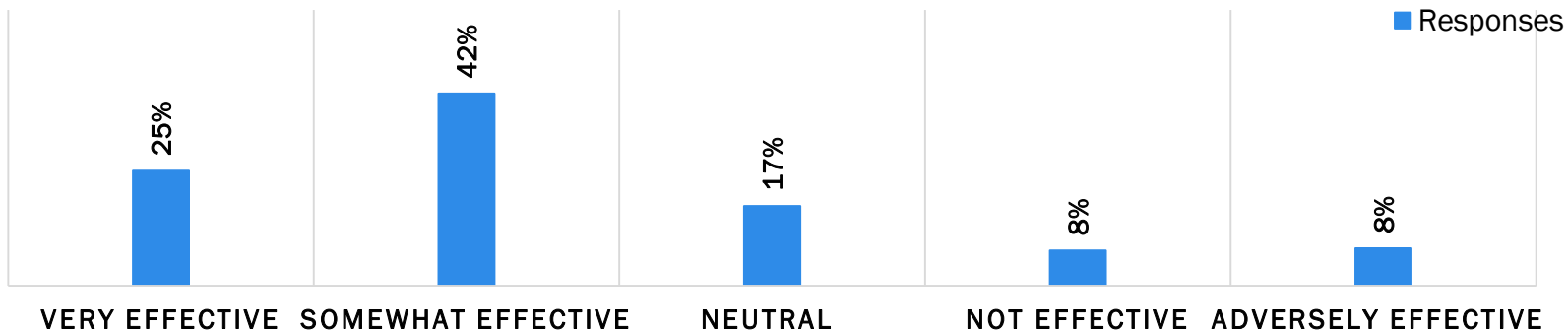
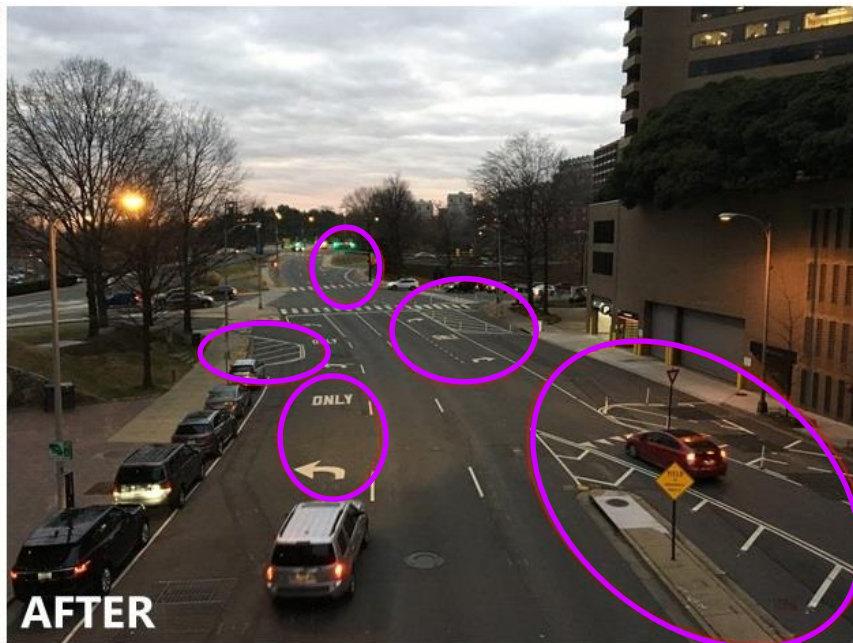
Fort Myer Drive and 19th Street N



Fort Myer Drive and 19th Street N



Fort Myer Drive and Fairfax Drive



What other street improvements would you like to see in Rosslyn?

- Improve pedestrian crossings, medians, and enforcement
- Enforce pick-ups/drop-offs in traffic/bike lanes/etc.
- Add and improve bike facilities
- Add and improve greenspace/tree canopy
- Provide better signage for all modes of transportation
- Improve signal timing for vehicles and pedestrians
- Increase traffic calming/speed enforcement
- Reduce open street pavement
- Improve bike/ped access to Key Bridge
- Fix Colonial Village sidewalks/trails
- Remove slip lanes
- Address bus idling/parking
- Make bus stops accessible and consistent
- Increase access to Metro station
- Address unmarked crossings to Metro entrance from Fort Myer Drive
- Limit impacts of construction activity
- Better define lanes
- Increase lighting levels on neighborhood streets
- Review safety and operations at various intersections:
 - Wilson Blvd & Fort Myer Dr
 - Key Blvd & Nash St
 - Clarendon Blvd & Oak St
 - 14th St & Meade St
 - Fairfax Dr & Fort Myer Dr
 - Wilson Blvd & Lynn St
 - Lee Hwy & Lynn St
 - Queen St & Fairfax Dr
 - Lee Hwy & Nash St
 - Lee Hwy & Fort Myer Dr

Thanks for your feedback!

Look forward to more changes coming soon...