

# South Carlin Springs Road Safety Study

May 2018

Update to APS & ACTC

# Completed

- Completed Communications Plan
- Added “No Left Turn Lane” Sign at Campbell ES Driveway
- Relocated trash bin at bus shelter north of 6th Rd S
- Recommended solution for frequent crossings at 1<sup>st</sup> St S
  - Low, continuous shrubbery between sidewalk and street outside Kenmore MS

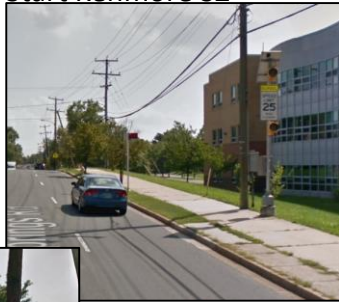
# In Progress

- Markings and bollards at intersections along the corridor
- Transit confirmed elimination of ART/WMATA stop across from Campbell ES and relocation of 3<sup>rd</sup> St S to far side of intersection
- Easements on 6<sup>th</sup> Rd S confirmed for signal improvements
- Requested signage changes to accommodate elongated school speed zone



**SOUTHBOUND**

Start Kenmore SZ



Kenmore SZ Sign



End Kenmore SZ

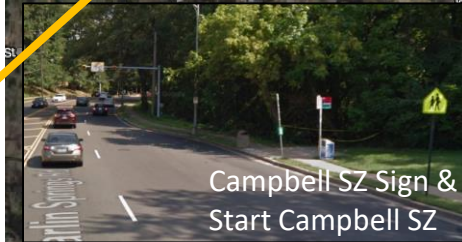
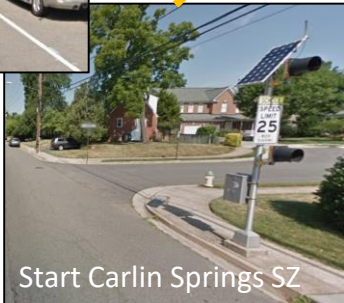


End Carlin Springs SZ



**EASTBOUND**

Start Carlin Springs SZ



Campbell SZ Sign & Start Campbell SZ



End Campbell SZ

# EXISTING CONDITIONS



Start Kenmore SZ



**NORTHBOUND**

End Campbell SZ



Start Campbell SZ



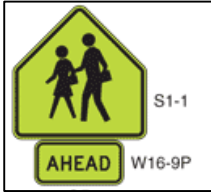
Campbell SZ Sign





**SOUTHBOUND**

Install S1-1 & W16-9P (SB)



Remove S5-2 (SB)



Add S1-1 in front of Carlin Springs ES in each Direction (NB & SB)

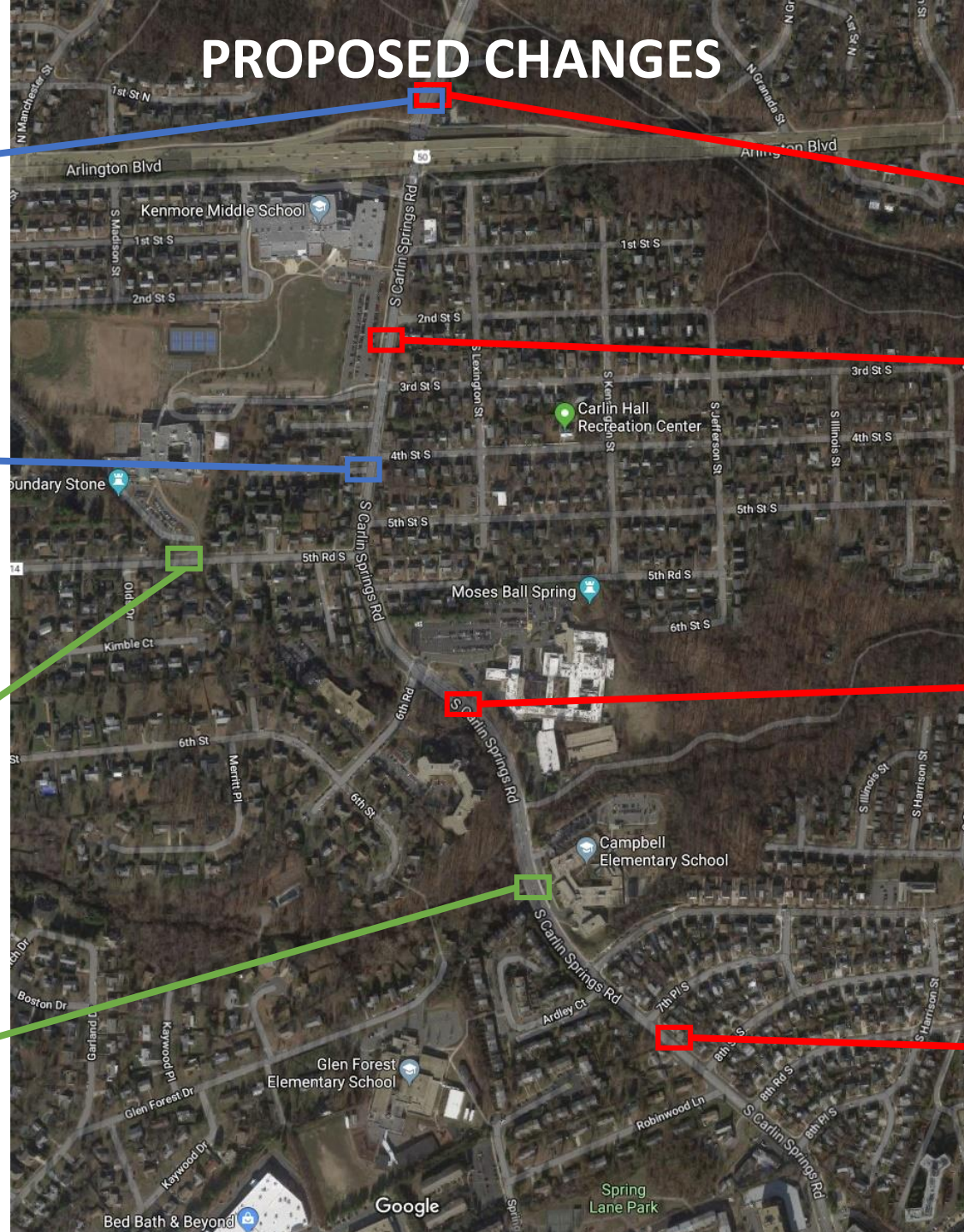


Add S1-1 in front of Campbell ES in each Direction (NB & SB)

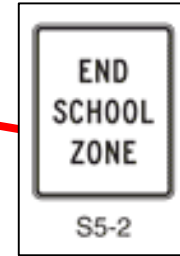


**BIDIRECTIONAL**

# PROPOSED CHANGES



Relocate S5-2 from Campbell



**NORTHBOUND**

Add S1-1 in front of Kenmore (NB)



Relocate S5-2 North of US-50



Add W16-9P



# Coming Soon

- Coordination on School Zone Flashers
- Addressing sidewalk overgrowth
- Short-mid term action items