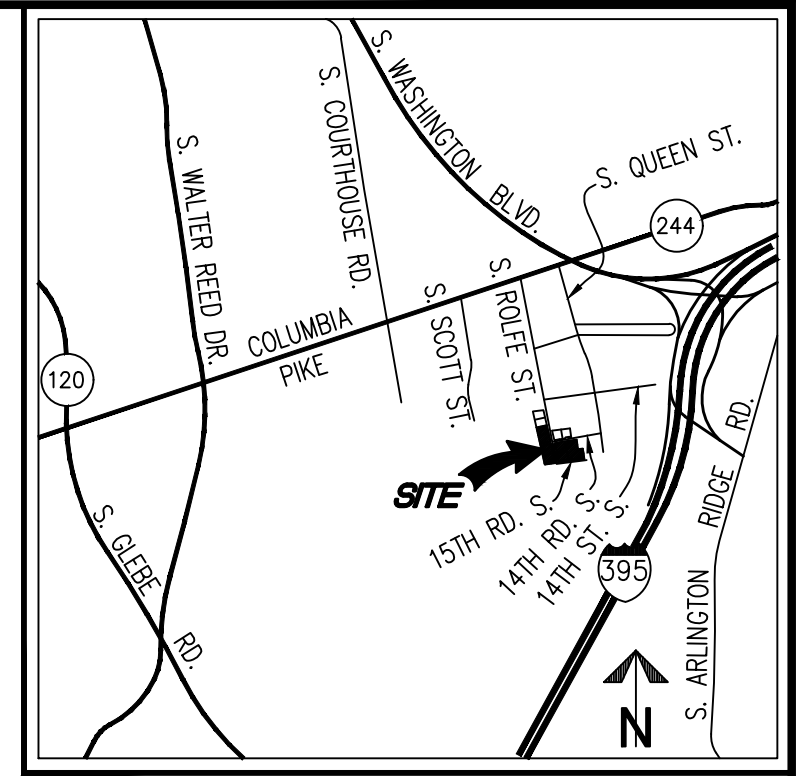


**CURVE TABLE**

CURVE	RADIUS	LENGTH	DELTA	TANGENT	CHORD	CHORD BEARING
C5	2,485.00'	100.48'	219°00"	50.25'	100.47'	N80°55'27"E



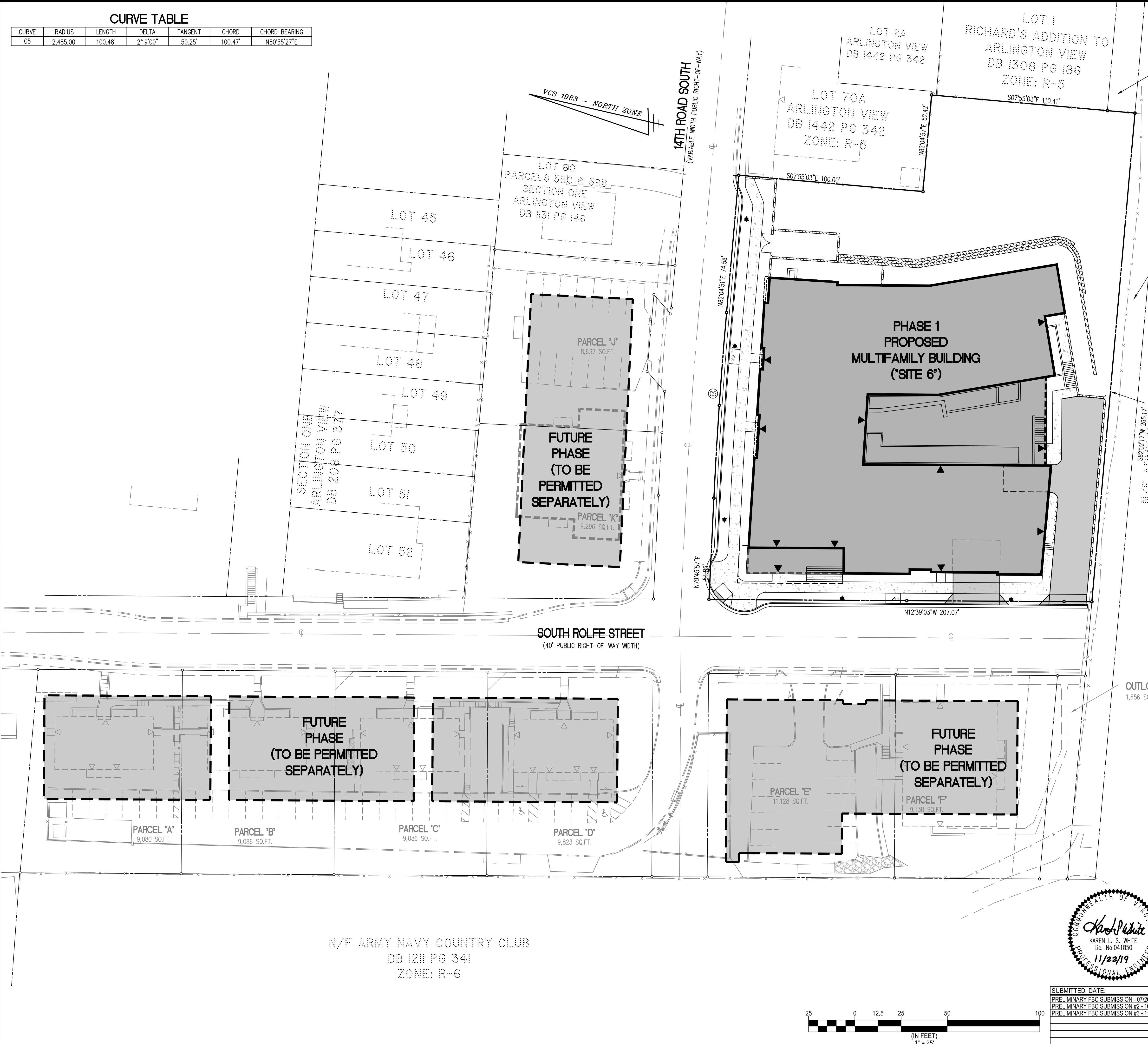
VICINITY MAP SCALE: 1"=2000'

**NOTES:**

1. THERE ARE NO HISTORIC DISTRICTS AND/OR STRUCTURES ON THE SITE.
2. THE PROPOSED MULTIFAMILY BUILDING (SITE 6) WILL BE CONSTRUCTED IN A SINGLE PHASE.
3. FUTURE PHASES ARE NOT INCLUDED WITH THIS FORM BASED CODE APPLICATION AND WILL BE PERMITTED SEPARATELY UNDER FUTURE APPLICATION(S).

**LEGEND**

PROPOSED	DESCRIPTION	EXISTING
	CURB & GUTTER CG-2	
	TRANSITION FROM CG-6 TO CG-6R	
	SANITARY SEWER	
	SANITARY LATERAL	
	CLEAN OUT	
	STORM SEWER	
	WATER MAIN	
	FIRE HYDRANT	
	PLUG	
	OVERHEAD WIRES	
	UTILITY POLE	
	UNDERGROUND ELECTRIC	
	TELEPHONE	
	GAS MAIN	
	ELECTRICAL	
	TRANSFORMER	
	HANDICAP RAMP (CG-12)	
	GUARDRAIL FENCE	
	TRAFFIC FLOW	
	LIGHT	
	DOOR	
	TREES	
	CONTOURS	
	SPOT ELEVATION	
	DRAINAGE FLOW DIRECTION	
	TOP OF CURB	
	BOTTOM OF CURB	
	TOP OF WALL	
	BOTTOM OF WALL	
	HIGH POINT	
	TEST PIT	
	LIMITS OF CLEARING AND GRADING	



**PHASING PLAN**

**WALTER L. PHILLIPS** INCORPORATED ESTABLISHED 1945

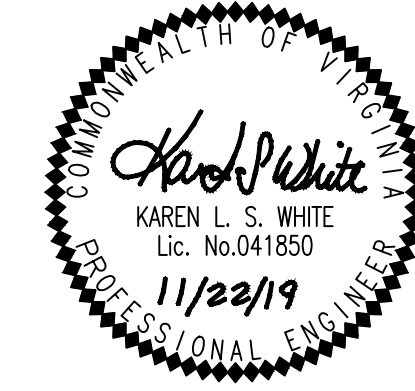
Engineers • Surveyors • Planners  
Landscape Architects • Arborists  
207 PARK AVENUE  
FALLS CHURCH, VIRGINIA 22046  
(703) 532-6163 Fax (703) 533-1301  
www.WLPINC.com

**ARLINGTON, VIRGINIA  
DEPARTMENT OF ENVIRONMENTAL SERVICES  
ARLINGTON VIEW TERRACE**

1736 14TH ROAD SOUTH, 1420 SOUTH ROLFE STREET & 1735 15TH STREET SOUTH  
PARCELS G, H, & I AND OUTLOT B  
ARLINGTON COUNTY, VIRGINIA

SCALE: 1"=25'	DRAWN: TPB	CHECKED: KSW
APPROVED DATE	CHIEF TRANSPORTATION PLANNING BUREAU	APPROVED DATE
APPROVED DATE	CHIEF ENGINEERING BUREAU	APPROVED DATE
CHIEF WATER, SEWER & STREETS BUREAU	CHIEF ENGINEERING BUREAU	DIRECTOR OF ENVIRONMENTAL SERVICES

SHEET: **P-1401**



SUBMITTED DATE:

PRELIMINARY FBC SUBMISSION - 07/26/2019
PRELIMINARY FBC SUBMISSION #2 - 10/01/2019
PRELIMINARY FBC SUBMISSION #3 - 11/22/2019

