

# Sports Commission Meeting Agenda

Wednesday, April 24, 2019

Arlington Mill CC Room 525

Time: 7:00-9:00pm

## *New Business*

- Therapeutic Recreation Introduction- April Rosenthal, Unit Manager- Therapeutic Recreation
- Scheduling and Maintenance of Indoor Space- Robin Leonard-Deputy Division Chief, Athletic and Facility Services
- Safe Sport Act Update- Greg Anselene, Manager of Sports Leagues and Field Management

## *Commissioner Updates*

## *Commission Member Reports*

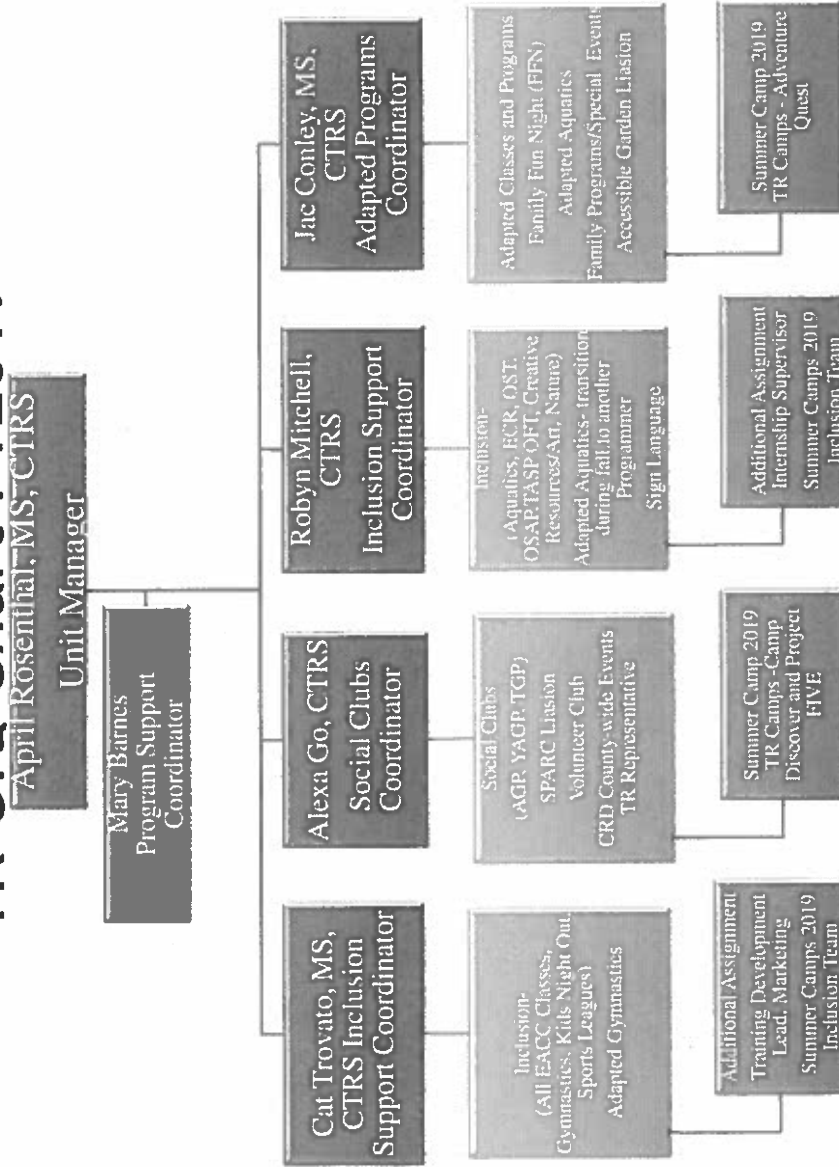
- 

## *Public Comment*

## *Upcoming Meetings:*

Sports Commission Meeting, Thursday, May 23, 2019 at 7pm at Langston Brown Community Center

# TR Org Chart FY2019



# DPR Scheduling and Maintenance of Indoor Space

Arlington Sports Commission Meeting

Wednesday, April 24, 2019

Arlington Mill Community Center

Room 525

# Facility Use Information

- DPR excited to have two new APS gymnasiums added to the facility use inventory in Fall 2019 (Fleet and the Heights) and Fall 2021 (Reed)
- One high school court size and two middle school court size
- AFS manages the coordination, scheduling and monitoring of use of the following facilities:
  - 5 Joint Use community centers (Carver, Drew, Gunston, Langston and TJ)
  - 9 County community centers
  - 29 APS standalone facilities
  - 10 Outdoor Sand Volleyball Courts
  - 92 Outdoor Tennis Courts
  - 87 Outdoor Basketball Courts
  - 1 Indoor synthetic field (Gunston Bubble)
  - 96 Athletic fields
  - 17 Picnic Shelters
  - Hendry House Rentals
  - Trail Rentals

# Scheduling Systems Used

- APS explored several scheduling systems early mid-2000's including Rec Trac
- APS chose Event Management System (EMS) as it worked best for APS scheduling needs
- DPR first started using Rec Trac in 1994
- EMS is not a viable option for DPR due to our need to have one system that can manage major business functions to include: facility reservations, league scheduling, class, program and camp registration, pass management, Point of Sales, Rental Module, etc.

# APS Facility Use Policy and Policy Implementation Procedures (PIP's)

- Policy K-7 Financial Management - Use of School Facilities
- Policy Implementation Procedure K-7 PIP-1
- Policy Implementation Procedure K-7 PIP-2

# Centralized APS Point of Contact for DPR

All communication with APS is funneled through AFS Facilities and Operations Section

Central POC represent County programs and community use of APS facilities scheduling office

Scheduling and/or Maintenance issues are addressed with individual facility coordinator at each site by the AFS POC

AFS Deputy Division Chief elevates any maintenance issues not acknowledged within 3 business days to APS Facilities and Operator

AFS Deputy Division Chief elevates any repeated facility use issues not addressed with the APS Assistant Superintendent, Administrative Services

# DPR Use of APS Facilities

Overall the coordination and scheduling of APS space is good

Receiving school event schedules in a timely manner from a few individual sites can be challenging.

Timing of space approvals can be an issue at times.

Last minute cancellations are still issues. However, we have seen improvement in this area

DPR and partner organizations responsible for any damage that occurs as a result of DF scheduled use



# Gym Equipment Maintenance and Repair

APS Safety Specialist along with their contractor perform annual gym equipment inspections (retractable and adjustable basket mechanism, baskets, rims, bleachers)

APS Safety Specialist also conducts annual floor inspections and if needed, additional inspections if issues arise. (Example: McKinley Gym Floor)

These inspections are used to develop action plan based on priority (immediate, medium and long term)

All gym equipment and floor maintenance and repair is preformed by APS Facilities and Operations Maintenance or APS contractors

Discovery ES and all middle schools and high school (except TJ) have wood floors.

Middle school and high school gyms re-sealed every summer. Re-surfaced 2-3 years

Kenmore is the next gym floor to get resurfaced due to water damage that patchwork was un to address

New elementary school standard is the Terraflex flooring (Abingdon, Fleet and Reed)

McKinley floor is similar but not the same as Abingdon and Fleet.

# Gym Allocation

- Winter Gyms (November through mid-March)
  - APS activities and athletics
  - DPR Youth basketball
  - Arlington Youth Travel basketball
  - DPR Adult basketball
  - DPR Partner Organizations winter activities
  - Arlington Youth Volleyball
- Spring Gyms (mid-March through mid-June)
  - APS activities and athletics
  - DPR Youth Basketball
  - DPR Adult Basketball
  - Arlington Youth Volleyball
  - Arlington AAU Teams
  - Non-Arlington AAU Teams
- Fall Gyms (mid-September through October)
  - APS activities and athletics
  - DPR Adult Basketball
  - Arlington Youth Travel Basketball

# APS Gymnasium Use

Used during the academic school day/year for physical education and other school programs

Used after school by the winter middle school basketball practices and games, and wrestling matches

Used for high school scholastic basketball practice and games

34 locations are used Monday through Friday during evening hours by DP leagues and programs, November through mid-March

On average 20 courts at 17 locations are used on Saturday/Sundays for DP leagues and programs, November through mid-March

DPR schedules 3-5 school locations/gyms for break blast and spring break camp

DPR is allocated exclusive use of 4 elementary schools for summer camp programs; all middle schools and high schools during the for five weeks before fall high school sports begin.

