



Arlington County RETIREE LINK



AmWINS Rates Changing January 2019



Individuals enrolled in the AmWINS Medicare Supplement Plan will see an increase in the monthly premium deduction effective with the January 31, 2019 pension payment. **See page 2 for more details.**

Kaiser Medicare premiums will remain the same due to a move to a Medicare Advantage plan. **See below for more details.**

The AmWINS increase is due primarily to the continued rise of prescription drug costs. You can help keep costs low by talking with your doctor about using generic drugs, using mail order, and shopping around for the best price.

Remember, pre-Medicare health (Cigna and Kaiser HMO) and dental rates will not change until the new fiscal year, beginning July 1, 2019. New rate information for those plans will be available in the Spring.



Kaiser Medicare Advantage



Kaiser Permanente is changing the type of contract it has with Medicare from a Medicare Cost contract to a Medicare Advantage contract and, on January 1, 2019, Kaiser will begin moving members to the Medicare Advantage plan.

Residents of DC and Maryland (except for Calvert, Carroll, and Frederick counties) will move to a KP Medicare Advantage plan effective January 1, 2019. Members impacted by the move have already been contacted by Kaiser and by Arlington County. Residents in Northern Virginia and Calvert, Carroll, and Frederick counties will move to KP Medicare Advantage in 2020. All Kaiser Medicare premium rates will remain the same because of this plan change.

Kaiser will still cover all services covered by traditional Medicare, and you will keep the same coverage and copays. Changing to a Medicare Advantage plan means that you will no longer be able to use your red, white, and blue Medicare card to seek services from Medicare providers outside of Kaiser Permanente. You will only be able to receive Medicare services from Kaiser Permanente providers. Each member will receive a new identification card that says Kaiser Permanente Medicare Advantage.

Kaiser Permanente has a team dedicated to retirees who are available and ready to answer all Medicare Advantage questions. They can be reached at 1-888-777-9909 from 8 AM to 6 PM EST Monday through Friday.

2019 AmWINS Medicare Supplement Rates

Important Reminders:

- ➔ The chart below is for retirees who retired prior to January 15, 2012 and are enrolled in AmWINS.
- ➔ Remember that your specific premium is based on your retirement date, years of service, and your original date of hire. The complete rate charts are available on the County's website at www.arlingtonva.us/retirement. If you don't have internet access to view the complete rate charts, or if you have questions, please contact us by calling 703-228-3500 and selecting option 1.
- ➔ If the County Share of your medical plan reaches the maximum subsidy for your Group, you are responsible for additional dental and medical premiums amounts.
- ➔ For Kaiser Medicare members, remember that your rates are not changing to due to the transition to Kaiser Medicare Advantage. See page 1 for more information.

AMWINS RATES JANUARY 1, 2019 TO DECEMBER 31, 2019				
<i>Retired Prior to January 15, 2012</i>				
	Coverage Level	Retiree Share	County Share	Change in Monthly Deduction
GROUP 1: Chapter 21 with 20+ yrs svc; Chapter 46 with 25+ yrs svc Max. Subsidy \$960	1 Adult	\$ 42.10	\$ 378.90	\$ 1.98
	2 Adults	\$ 84.20	\$ 757.80	\$ 3.97
GROUP 2: Chapter 46 with 23-24 yrs. svc. Max. Subsidy \$883	1 Adult	\$ 72.41	\$ 348.59	\$ 3.41
	2 Adults	\$ 144.82	\$ 697.18	\$ 6.83
GROUP 3: Chapter 46 with 20-22 yrs. svc. Max. Subsidy \$768	1 Adult	\$ 117.88	\$ 303.12	\$ 5.56
	2 Adults	\$ 235.76	\$ 606.24	\$ 11.12
GROUP 4: Ch 21 & 46 with 15-19 yrs. svc. Max. Subsidy \$576	1 Adult	\$ 193.66	\$ 227.34	\$ 9.13
	2 Adults	\$ 87.32	\$ 454.68	\$ 18.26
GROUP 5: Ch 21 & 46 with 10-14 yrs. svc. Max. Subsidy \$384	1 Adult	\$ 269.44	\$ 151.56	\$ 12.70
	2 Adults	\$ 538.88	\$ 303.12	\$ 25.41
GROUP 6: Ch 21 & 46 with 0-9 yrs. svc. Max. Subsidy \$192	1 Adult	\$ 345.22	\$ 75.78	\$ 16.28
	2 Adults	\$ 690.44	\$ 151.56	\$ 32.55

2019 AmWINS Medicare Supplement Rates

Important Reminders:

- ➔ The chart below is for retirees who were hired prior to July 1, 2008 and retired on or after January 15, 2012 and are enrolled in AmWINS.
- ➔ Remember that your specific premium is based on your retirement date, years of service, and your original date of hire. The complete rate charts are available on the County's website at www.arlingtonva.us/retirement. If you don't have internet access to view the complete rate charts, or if you have questions, please contact us by calling 703-228-3500 and selecting option 1.
- ➔ If the County Share of your medical plan reaches the maximum subsidy for your Group, you are responsible for additional dental and medical premium amounts.
- ➔ For Kaiser Medicare members, remember that your rates are not changing to due to the transition to Kaiser Medicare Advantage. See page 1 for more information.

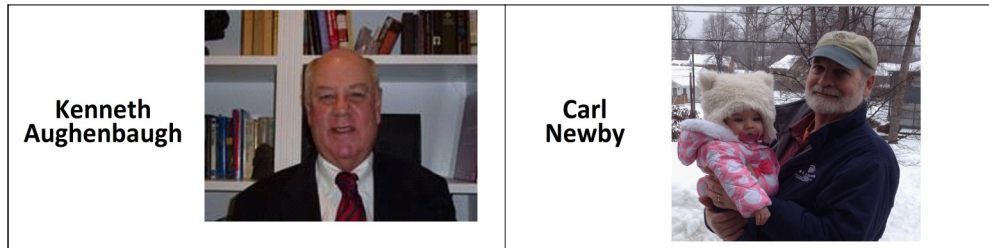
AMWINS RATES JANUARY 1, 2019 TO DECEMBER 31, 2019				
<i>Hired before July 1, 2008 and retired on or after January 15, 2012</i>				
	Coverage Level	Retiree Share	County Share	Change in Monthly Deduction
GROUP 1: Chapter 21 with 20+ yrs svc; Chapter 46 with 25+ yrs svc Max. Subsidy \$600	1 Adult	\$ 42.10	\$ 378.90	\$ 1.98
	2 Adults	\$ 242.00	\$ 600.00	\$ 39.70
GROUP 2: Chapter 46 with 23-24 yrs. svc. Max. Subsidy \$552	1 Adult	\$ 72.41	\$ 348.59	\$ 3.41
	2 Adults	\$ 290.00	\$ 552.00	\$ 39.70
GROUP 3: Chapter 46 with 20-22 yrs. svc. Max. Subsidy \$480	1 Adult	\$ 117.88	\$ 303.12	\$ 5.56
	2 Adults	\$ 362.00	\$ 480.00	\$ 39.70
GROUP 4: Ch 21 & 46 with 15-19 yrs. svc. Max. Subsidy \$360	1 Adult	\$ 193.66	\$ 227.34	\$ 9.13
	2 Adults	\$ 482.00	\$ 360.00	\$ 39.70
GROUP 5: Ch 21 & 46 with 10-14 yrs. svc. Max. Subsidy \$240	1 Adult	\$ 269.44	\$ 151.56	\$ 12.70
	2 Adults	\$ 602.00	\$ 240.00	\$ 39.70
GROUP 6: Ch 21 & 46 with 0-9 yrs. svc. Max. Subsidy \$120	1 Adult	\$ 345.22	\$ 75.78	\$ 16.28
	2 Adults	\$ 722.00	\$ 120.00	\$ 39.70



ACERS Board of Trustees Nominees for Retirees' Substitute Trustee

We are pleased to announce that Richard Alt will continue as the Retirees' Primary Trustee on the ACERS Board. He was the sole retiree receiving the required nominations and, therefore, will be deemed elected by the County Manager, Mark Schwartz.

We have two retirees who successfully received enough nominations for the Substitute Trustee position: Kenneth Aughenbaugh and Carl Newby. Brief biographies for each are posted at <https://careers.arlingtonva.us/retirement-board/>.



To select your representative as the Substitute Trustee, please participate in the election November 16, 2018 – December 5, 2018.



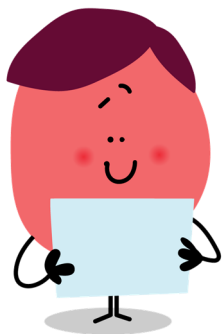
How to Vote

1. Log in to: <https://eballot4.votenet.com/acva> between November 16 and December 5.

You should have received a letter with your username. If not, your User Name is: **1st initial of first name and your last name** (ex. JSmithJr) and your password is the four-digit year of your birth.

2. **Select your candidate for Substitute Trustee.**
3. **Confirm your selection.** Review your selections, check the Participant Consent box and click Submit.

Prepare for Your 2018 Tax Return: Update Your Address Now



The County will be mailing your 2018 Form 1099-R tax form and your Form 1095-C (Affordable Care Act reporting form for Cigna members only) no later than January 31, 2019.

If you have had or will have an address change before January 31, 2019, please remember to send your new address and phone number to the Benefits team by calling, emailing, faxing, or mailing us the information.

Direct your retirement and benefits questions to benefits@arlingtonva.us

We may also be reached by:

Phone: 703-228-3500 or 800-818-4910 (select option 1) **Fax:** 703-228-3265